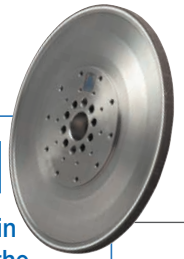


Ceramic technologies drive expansion into four segments

The Noritake Group is operating in four segments by applying the technologies we cultivated through manufacturing porcelain and developing various ceramic technologies.

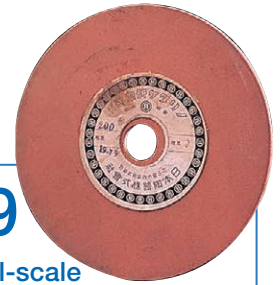
The Industrial Products Group supports industries with grinding wheels and diamond tools, the Ceramics & Materials Group supplies ceramic raw materials to various manufacturing industries, the Engineering Group develops and proposes manufacturing equipment and technology, and the Tabletop Group produces lavish tableware.

In each field, we create new value for customers and society.



1971

Succeeded in developing the world's first vitrified CBN grinding wheel

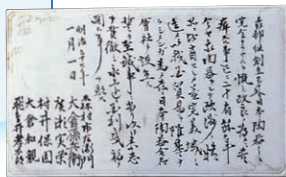


1939

Began full-scale production of industrial grinding wheels

1904

Established Nippon Toki Gomei Kaisha (Current, NORITAKE CO., LIMITED)



1914

Succeeded in production of the first dinner set in Japan



1932

Began research and production of bone china

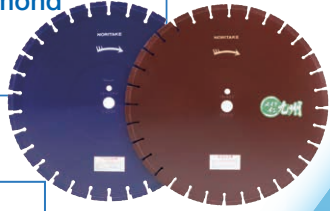


- 1904** Established NIPPON TOKI GOMEI KAISHA
- 1907** Began production of grinding wheels for tableware
- 1909** Proclaimed the Noritake Creed
- 1914** Succeeded in production of the first dinner set in Japan
- 1917** Reorganized into NIPPON TOKI CO., LTD.
- 1918** Began production of decalcomania paper for tableware
- 1932** Began research and production of bone china
- 1939** Began full-scale production of industrial grinding wheels
- 1947** Established NORITAKE CO., INC. in the USA
- 1958** Established NORITAKE (AUSTRALIA) PTY LTD.
- 1960** Began operation of Kamori Plant (production of resinoid grinding wheels)

- 1964** Began operation of Miyoshi Plant (production of tableware)
- 1967** ISE ELECTRONICS CORPORATION (currently NORITAKE ITRON CORPORATION) developed vacuum fluorescent displays
- Developed printing technology for thick film circuits
- 1971** Succeeded in developing the world's first vitrified CBN grinding wheel
- 1972** Began production of diamond tools
- Established current NORITAKE LANKA PORCELAIN (PVT) LIMITED
- 1973** Introduced technology for static mixer
- 1975** Launched the Noritake Roller Hearth Kiln
- 1981** NIPPON TOKI CO., LTD. was renamed to NORITAKE CO., LIMITED
- 1983** Developed far-infrared ceramic heaters

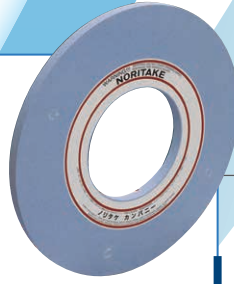
1972

Began production of diamond tools



1990

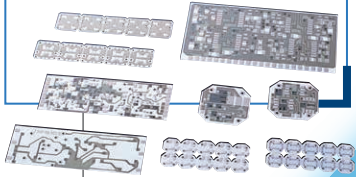
Developed ceramic grain wheel (CX wheel)



Industrial Products Business

1967

Developed printing technology for thick film circuits



1984

Launched electrode paste for multi-layer ceramic capacitor



Ceramics & Materials Business

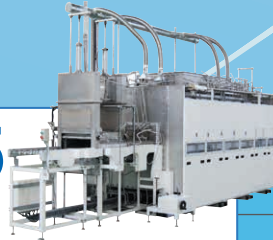
1973

Introduced technology of static mixer



1975

Launched Noritake Roller Hearth Kiln



Engineering Business

2011

Presented the "Masterpiece Collection"



Tabletop Business

- 1984** | Launched electrode paste for multi-layer ceramic capacitor
- 1987** | Established NORITAKE EUROPA GMBH in Germany
- 1988** | Established NORITAKE TAIPEI CO., LTD. in Taiwan
- 1990** | Developed Ceramic Grain CX Wheel
- 1994** | Began supply of Roller Hearth Kilns for Li-ion batteries
- 1995** | Established current NORITAKE SCG PLASTER CO., LTD. in Thailand
- | Established PT. NORITAKE INDONESIA
- 1997** | Established ITRON (U.K.) LIMITED
- 2001** | Opened Noritake Garden

- 2004** | 100th anniversary of foundation
- | Established NORITAKE SHANGHAI TRADING CO., LTD. in China
- 2011** | Presented the "Masterpiece Collection"
- 2012** | Established NORITAKE SA (THAILAND) CO., LTD.
- | Opened the tableware shop "Noritake Ginza" in Tokyo
- | Made KCM CORPORATION a wholly-owned subsidiary
- 2013** | Began operation NORITAKE ABRASIVES (SUZHOU) CO., LTD. in China
- 2014** | Main production site moved to Miyoshi Plant
- | Made NIPPON RESIBON CORPORATION a consolidated subsidiary
- 2018** | Made NIHON FUREKI SANGYO CO., LTD. a wholly-owned subsidiary