

# 2F China Painting Experience Corner

## Craft Center 2F

Paint designs on white plates and mugs to create original pieces that are all your own. Join us any time we have seats available. Allow 2-3 weeks for delivery of your finished piece.



**Hours:** 10:00 AM-4:00 PM

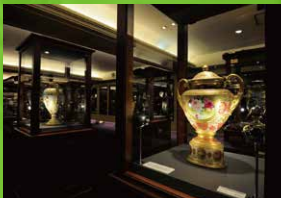
**Cost:** JPY 2,000 and up  
(tax and domestic shipping fees included)

\*Extra shipping charges apply to overseas deliveries.

# 3F, 4F Noritake Museum

*Discover the beauty and traditions of Noritake*

The fourth floor features "Old Noritake" pieces manufactured and exported in the late 19th and early 20th centuries as well as colorful and exactness design books. Enter a gorgeous, vibrant world of nearly endless artistic techniques.



The third floor showcases pieces produced after the establishment of Nippon Toki (now NORITAKE CO., LIMITED) in 1904, primarily industrially produced dinnerware products. Witness the evolution of Noritake's design through the changing aesthetics of time.

## Craft Center floor guide

Noritake Museum

4F

Enjoy gorgeous Old Noritake pieces primarily manufactured for export to the US, as well as beautiful design books.

Noritake Museum

3F

See the "Sedan", the first Western-style dinner set made in Japan, plus rows and rows of other dinnerware pieces on display. This floor also features a special exhibition area.

Craft Center  
(Painting observation facility and workshop)

2F

Observe experienced artisans engaged in various aspects of the painting process, including hand-painting techniques. Visitors can also participate in a painting workshop for an additional fee.

Craft Center  
(Modeling observation facility)

1F

Learn about the slip casting technique and how porcelain makers use it to do everything from mold making to glaze firing.

Note: We recommend that you visit the floors in the following order: 1F→2F→4F→3F



### Access information: Public transportation

- 15-minute walk from JR Nagoya, Meitetsu Nagoya, or Kintetsu Nagoya Station
- 5-minute walk from Exit 2 at Kamejima Station on the Nagoya Subway Higashiyama Line
- 3-minute bus ride from the Nagoya City Bus Terminal (Board at platform #6 and get off at the Noritake no Mori stop)
- 15-minute bus ride from the Nagoya City Bus Terminal (Board at the Me-guru platform and get off at the Noritake no Mori stop)

### By car

- 10 minutes from the Nishikibashi exit off the Nagoya Expressway Ring Route

**Closed:** Mondays (or the following weekday if Monday is a holiday) and over the New Year holidays

**Hours:** 10:00AM-5:00PM

**Admission:** 500 yen for adults and university students, 300 yen for guests of age 65 and up, and free for high school students and younger. Free for disabled guests who show their disability passbook. Group discounts are available (10% for groups of 30-99, 20% for groups of 100+).

Combined tickets for the Noritake Museum and the Commemorative Museum of Industry and Technology are 800 yen.  
**Parking:** 100 yen/30 min (free all-day parking with purchase of 5,000 yen or more at Noritake Garden's shops and restaurants)

### Noritake Garden Craft Center

3-1-36, Noritake Shinmachi, Nishi-ku, Nagoya, 451-8501

Contact: TEL: 052-561-7114 FAX: 052-561-7276

Website: [www.noritake.co.jp/mori](http://www.noritake.co.jp/mori)



2019.12 3.000



*Learn. Create. The Beauty of Porcelain.*

# Craft Center

Noritake Garden Craft Center



ノリタケの森